



INSTALLATION GUIDE

ISNORKEL034XLT

FORD PX RANGER XLT 9/2011- 7/2015 2.2 & 3.2L DIESEL

FORD PX RANGER Mk II XLT 7/2015+ 2.2 & 3.2L DIESEL



- Ironman 4x4 Snorkel fits to the right hand side of the Ford PX Ranger XLT and PX Ranger Mk II XLT.
- It will take about 3 hours to install.
- Below is a list of some required tools for installing your Ironman 4x4 Snorkel:
 - **Step Drill**
 - **Spanner (13mm)**
 - **Pop Rivet Gun**

NOTE: Only use "sensor safe" sealant during installation

IMPORTANT: Snorkel installations should only be done by a qualified person and it is the responsibility of this person to ensure correct fitment and to ensure the installation is water tight.

1. Before installation check snorkel application is compatible with your vehicle
These instructions are for PX XL or PX XL Mk II only.
Refer to headings throughout these instructions for directions specific to your vehicle.

PX Mk II

- 2A. Remove right hand front mud guard liner, mud flap, air box, air entry duct to air box, mud guard stuffer, front mud guard grill and side marker indicator.



- 3A. Apply masking tape around opening on mudguard and to screen pillar.



- 4A. Locate paper drilling template on page 8 of these fitting instructions and cut out shaded areas. Place template in position on right hand mudguard, aligning with opening and guard edge, then mark holes.



- 5A. Drill 16mm mounting holes using a step drill.
De-burr and rust-proof exposed metal.



PX

- 2B. Remove right hand front mud guard liner, mud flap, air box, air entry duct to air box, mud guard stuffer, front mud guard grill and side marker indicator.



- 3B. Apply masking tape to right hand windscreen pillar.

- 4B. Attach snorkel securing bracket from inside of mud guard using pop rivets supplied as shown.



PX and PX Mk II

- 5A&B.
Stick snorkel gasket to back of snorkel body as shown, using lock tight screw studs into captive nuts on back of snorkel body.

NOTE: Long 40mm stud goes in hole as shown.



- 6A&B.
Attach upper mounting bracket loosely to snorkel.



7A&B.

Hold snorkel body in position on mud guard. Mark location of top mounting bracket onto screen pillar.

NOTE: Make sure that snorkel mounting bracket clears the driver's side door.

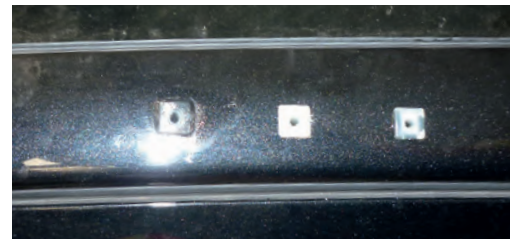
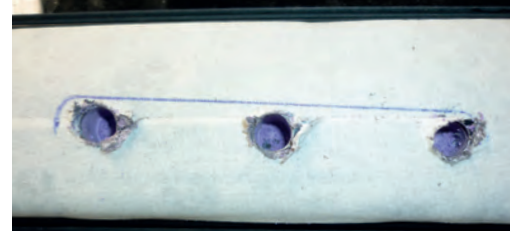


8A&B.

Remove mounting bracket from snorkel. Hold bracket in position previously marked on pillar and mark three mounting holes.

Drill mounting holes in pillar to 7.5mm. Apply silicone sealant. Insert mounting plugs and attach mounting bracket using three self tapping screws provided.

NOTE: When drilling holes, drill far enough into pillar insulation to allow plugs to be inserted.



PX Mk II

- 9A. Install snorkel body to mudguard. Place snorkel mounting plate over studs and secure in position with nyloc nuts and body washers provided. Attach to pillar bracket using M6 bolts and washers provided.



PX

- 9B. Install snorkel body to vehicle using three nyloc nuts and body washers provided and attach to pillar bracket using M6 bolts and washers provided.



PX and PX Mk II

10A&B.

Drill hole in mounting flange for rear air duct to 8.5mm. Hole is marked by a dimple.

Apply a liberal amount of silicone to snorkel body and rear air duct. Engage mounting flange for rear air duct to long stud on snorkel and secure using M8 Nyloc nut and washer provided.

NOTE: Make sure that connection is properly sealed.



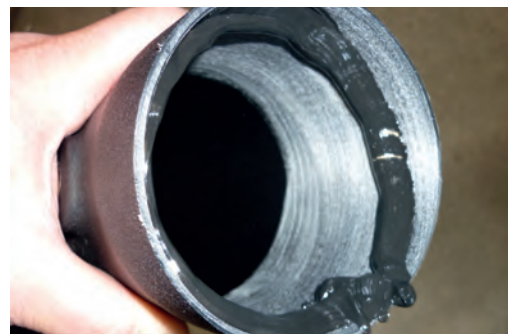
11A&B.

Attach duct bracket to captive nut in duct. Mark hole location on inner guard and drill to 8.5mm, then attach using M8 bolt, nut and washers provided.



12A&B.

Apply a liberal amount of silicone to both internal and external mating surfaces of front and rear ducts and push together as shown. Make sure that connection is sealed.



13A&B.

Attach front duct mounting bracket as shown and secure using hardware provided.

NOTE: Factory bracket may need to be bent up to allow clearance for front air duct as shown in red circle.



14A&B.

Remove factory adaptor from air cleaner as shown.



15A&B.

Fit supplied air box adaptor to air box. Seal both inner and outer mating surfaces with a liberal amount of silicone. Secure in place using self tapping screws provided.



16A&B.

Apply a liberal amount of silicone to air box adaptor and air entry duct and refit air box to vehicle.

NOTE: Ensure connection is properly sealed.



17A&B.

Check all hose connections and air box for potential leaks and seal as required.

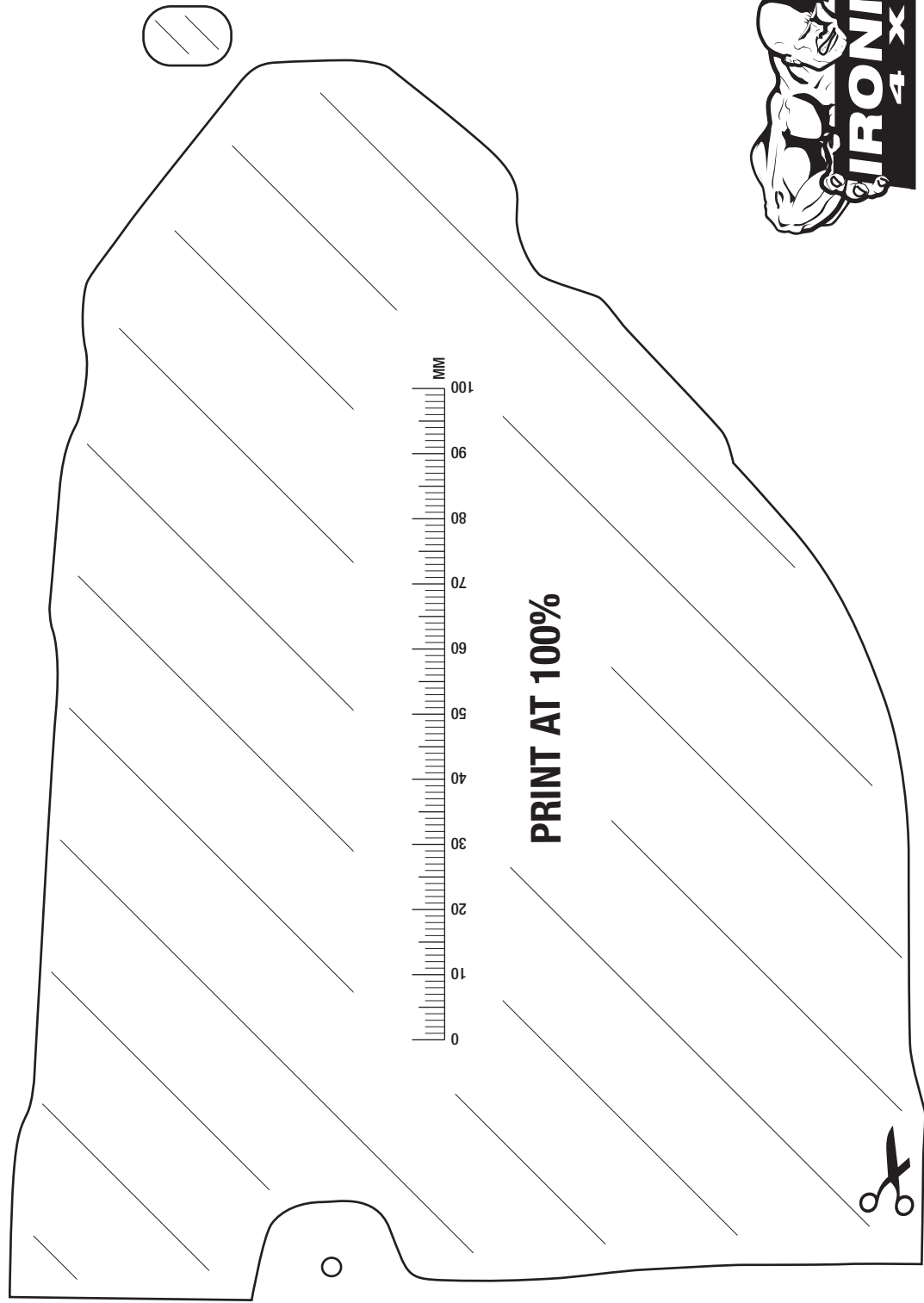
18A&B.

Re-fit guard liner and mud flap.

19A&B.

Fit Ironman 4x4 Air Ram and secure with hose clamp provided.





ALIGN WITH EDGE OF FRONT GUARD



FORD PX RANGER MK II
ISNORKELO34 / ISNORKELO34XLT
SNORKEL TEMPLATE

